



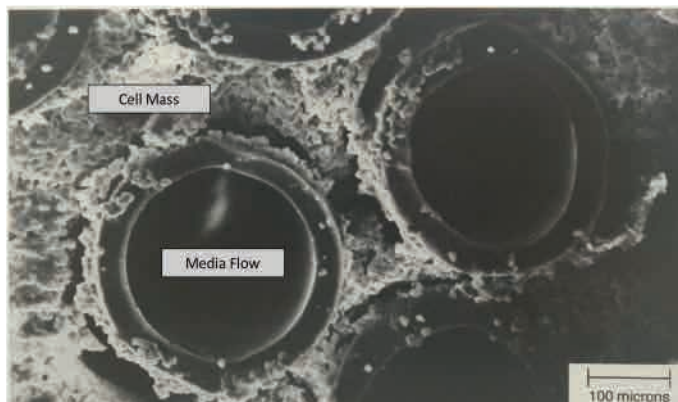
Flexible Facilities: Fits in a standard CO₂ incubator

SMALL SCALE HOLLOW FIBER BIOREACTOR

- High density cell culture: 5×10^{10} cells
- Single-use cultureware includes:
 - 1.5m² hollow fiber cartridge
 - High-efficiency oxygenator
- Linear scale-up to automated systems
- Manual control
- Easy set-up

APPLICATIONS

- Ideal for:
 - <1g production of challenging proteins
 - Feasibility runs for C3's automated hollow fiber systems
- Manufactures expressed proteins from mammalian and insect cell lines:
 - Monoclonal antibodies
 - Recombinant proteins
- Supports adherent and suspension cells



Cells grow to a tissue-like density outside the hollow fibers to maximize production (EM photo of hollow fiber cross section)

FEATURES

BENEFITS

Perfusion	Supports high cell density for maximum productivity
Gas Exchange Cartridge	Improves cell health compared to simplistic silicone tubing
Continuous Harvest	Decreases labor, protects quality
No Passaging Required	Reduces labor
Extended Runs (Weeks to Months)	Flexible production schedules
Concentrated Harvest	Reduces downstream processing
Single-Use	Ready-to-Use, rapid turnaround

SPECIFICATIONS

Weight	0.9kg
Equipment	Peristaltic pump
Requirements	2 pump heads CO ₂ incubator
Dimensions (cm)	12 W x 20 D x 33 H