



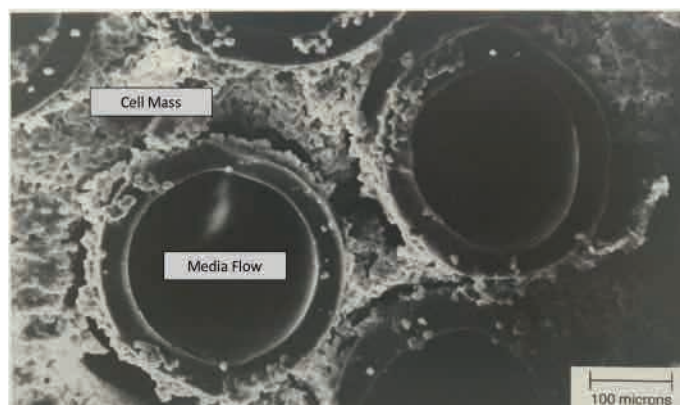
Flexible Facilities: Up to 200L cell culture in a benchtop unit

BENCHTOP PRODUCTION SCALE BIOREACTOR

- 80L-200L fed-batch equivalent
- Accommodates 1-2x cell culture cartridges
- Linear scale-up or -down
- Single-use cultureware provided sterile and ready to use
- Automated control of pH, temperature, tissue perfusion rate, and harvest rate
- Fed-batch or continuous harvest options
- Optional in-line filter for harvest clarification to reduce downstream processing
- Electronic logbook records process changes, alarms, and periodic sensor values

APPLICATIONS

- Manufactures expressed proteins from mammalian and insect cell lines:
 - Monoclonal antibodies
 - Recombinant proteins
- Supports adherent and suspension cells
- Diagnostic, therapeutic, veterinary, and research applications



Cells grow to a tissue-like density outside the hollow fibers to maximize production (EM photo of hollow fiber cross section)

FEATURES

Perfusion	Supports high cell density for maximum production
Extended Run Lengths	Production flexibility
Automation	Decreases labor, protects quality
Continuous Harvest	Protects product by collecting into a refrigerator
Concentrated Product	Reduces downstream processing
Benchtop	Small footprint, large batch size
Multiple Cultureware Size Options	Choose production scale to match batch size needs
Single-Use	No cleaning validation, rapid turnaround

BENEFITS

SPECIFICATIONS

Weight	54.4 kg
Facility Temperature	18-26°C ambient
Facility Requirements	100% CO ₂ , 14-16 psi
Dimensions (cm)	70 W x 66 D x 52 H
Electrical Requirements	Single phase, 100-230 VAC, maximum 500 Watts